



Civic Society News

January 2025



Next Speakers Meeting
Thursday 16th January
In the Memorial Hall 7.30pm

Non-Members welcome £3 admission



RICHARD III

'Hero or Villain?'

Presented by Jim Robinson

Geordie, amateur historian, Ricardian and no fan of the Tudors !!



Our January Speaker Meeting – Richard III

The great majority of you will know Jim Robinson, ex-chairman of the Society, but what you may not know is that one of Jim's great interests is Richard III, a controversial figure to put it mildly. Here is what Jim says by way of an introduction:

" 'What will men say of him?' was the question asked following the great battle fought on Bosworth Field. They would say what they said of Richard III while he lived - and worse. That he was a tyrant, usurper of his nephew's throne, and murderer. That he was hated by his enemies with a passion equally rare in any reign, that he was a heroic warrior, dynamic leader, regicide and a bloodthirsty despot. History and his own age have not been kind to the man who was one of England's great enigmatic Kings and whose image even today is still surrounded by mystery and controversy."

The earliest surviving portrait of Richard III circa 1520

Dear Members,

Welcome to 2025, not sure where 2024 went but here we are.

A couple of things to point out for January and February.

Our **January meeting is early in the month on the 16th January**, usual time, usual place and we'll be welcoming Jim Robinson to talk to us about one of his favourite subjects, Richard III, see you there.

Please note that our **February meeting will be a week later than advertised and will be on Thursday 27th February**, this to accommodate the Panto.

As ever, we have a full calendar for 2025, and we've been asked to let everyone know that when groups or individuals are arranging functions of any sort, to help avoid clashes, there is a **village diary** kept by Wendy Green in The Hub.

Wishing you all a healthy and happy 2025.

Gill

Our 2024 Christmas Party

Thanks to all who helped, and all who came along to our Christmas Party in December. It was great fun. Route 65 kept us dancing, I'm sure I wasn't the only one whose hips had a good workout.



Thank you from Addingham Methodist Church

We have been asked to pass on thanks to all who helped, baked and/or attended their **December Christmas Cracker Coffee Morning**.

This is their message.

"We had a wonderful Christmas Cracker Coffee morning yesterday. Addingham Methodist Church would like to say a massive thank you to everyone who contributed in any way and lent their support by attending our Christmas Cracker. Despite the weather it was a fantastic turn-out; the hall was absolutely buzzing with people socialising and enjoying their lovely refreshments. We raised an amazing £1,036 which will be shared equally with the British Red Cross Gaza Appeal and Sue Ryder Manorlands Hospice. Thanks everyone."



We would also like to thank everyone for their most generous donations of food for the Salvation Army. These will be taken to the Keighley Branch of the Salvation Army who are desperate for these foodstuffs. Just have a look at these photos - what an amazing sight! We are humbled by the village's generosity."

Thanks again you lovely, kind and generous people

Ian Cameron writes for the Heritage Group:

Honey production in Addingham before the beehive

Men and women have been making honey for 9000 years. Until the beehive was invented in America in the 1850's, bees were kept in skeps and here is a wonderful photo of Kate Mason holding such a skep at Reynard Ing Farm. Really, skeps were just upturned large straw baskets, but they gave good all-weather protection to the bees that were attached to the inner wall. To get at that honey though, the bee swarm had to be encouraged to leave or be killed through drowning or suffocation. The skeps were usually kept on open wooden stands or in lean-to bee shelters – all gone with the passing of the years.



In rural communities though, there survive a less common way of housing skeps – bee boles. These were recesses built as an integral part of a wall. Opening only at the front, they shield the skep from wind and rain.



At Brumfitt Hill (1755), off Main Street, there is a remarkable set of five bee boles inset into the garden wall. Three are shown here. While difficult to date, perhaps these were built in the 1820's as part of the changes associated with the building of the Swan. They face south, exactly as recommended by the Roman writer Columella. They are also near the house, which was recommended by later writers, but for safety reasons, as honey was a valuable commodity.

Bee Boles did not always find favour. In 1834, Samuel Bagster wrote about the management of bees and considered bee boles the most inefficient way of keeping bees. However, it would be the introduction

to our country in 1862 of the beehive with its moveable frame, that led to the demise of both skeps and bee boles, and the replacement of a new way of producing honey that is still with us today.

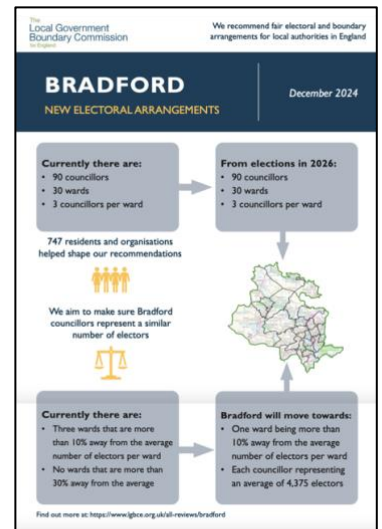
As a reminder of a bygone era, Addingham, fortunately, still has a number of sites with Bee Boles and these are listed in the national Bee Bole Register. Started in 1952, this register now has over 1600 sites listed across the UK and Ireland. For more information please do look at a presentation by Ian Cameron, Pam Parrington and John Fontana that is available at <https://www.addinghamcivicsociety.org.uk/acs/heritage/past-current-projects>.

Local Ward Boundary Review

You may remember that last year The Boundary Commission required Bradford Council to conduct a review into the local Ward Boundaries. Some of you may have completed their consultation.

The Boundary Commission has a legal duty to carry out an electoral review of each council in England if the wards have an unequal number of electors, or if it has been a long time since they were last reviewed. They do this to ensure that councillors represent a similar number of electors, as population changes over time can cause certain areas to be over or underrepresented.

On the 3rd of December Bradford published their final recommendations for future electoral arrangements. The Council noted that they were extremely grateful to the people of Bradford who took the time and effort to send in their views. They considered every piece of evidence they received before finalising their recommendations.



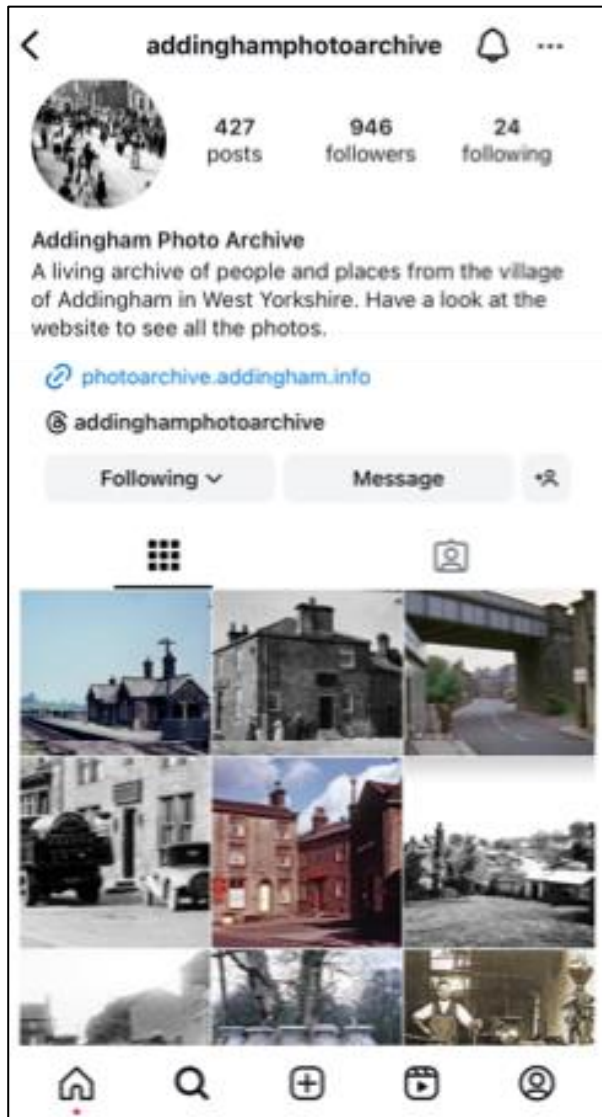
The Council noted that they were extremely grateful to the people of Bradford who took the time and effort to send in their views. They considered every piece of evidence they received before finalising their recommendations.

The recommendations move Addingham out of Craven and into the Ilkley Ward.

If you would like to read the final recommendations just click [here](#) or go to the Bradford website:

<https://www.lgbce.org.uk/all-reviews/bradford>

Our Addingham Photo Archive on Instagram



Our Heritage Group regularly posts Archive photographs on Instagram and has 946 followers, some from as far away as Australia.

Do have a look, you might like to follow them.

Here's their post from the 29th of December



As always, a Huge Thank You to all our Speakers, Volunteers, Subscribers, and Contributors to the Newsletter.

Please send entries for the December Newsletter to Jane Welby before Saturday 25th January.

secretary@addinghamcivicsociety.co.uk

Wishing you all a very Happy New Year

**Wishing a Happy and Peaceful 2025
to all our members, friends and families**