



THURSDAY 18th JUNE

7.30 pm Memorial Hall

SPEAKER MEETING



NON-MEMBERS WELCOME – ONLY £3

William Morris &

The Arts and Crafts Movement

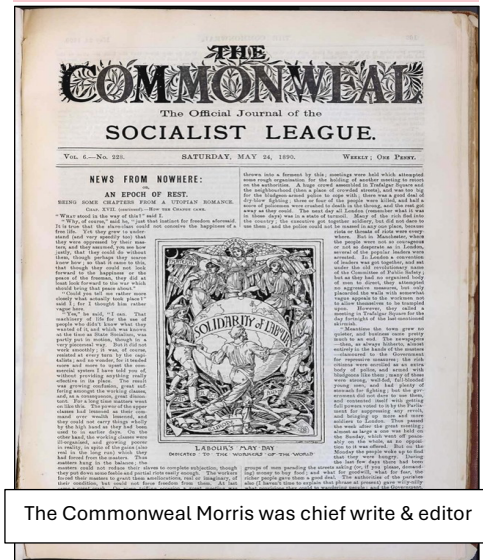
Speaker: John Blewit. This talk will explore William Morris in Yorkshire.

John has written and edited books on Morris, is current editor of the Journal of William Morris Studies and a trustee of the Ilkley and District u3a.

Morris & Co decorated many prestigious properties in Yorkshire, including Castle Howard. The Morris family were good friends with George and Rosalind Howard (later the Earl and Countess of Carlisle). Morris & Co stained glass adorns many churches in the county, including Bradford Cathedral. Morris used Yorkshire-based companies to manufacture carpets to his design, and in 1875 spent a week in Leeds sorting out a case of plagiarism. As founder of the arts and crafts movement in England, he also influenced many architects whose work can be seen in many towns and cities. As a socialist activist in the 1880s, he lectured in Bradford, Leeds, Shipley and Huddersfield and was an inspiration to the men and women who established the Independent



William Morris. The Castle Howard Collection



The Commonwealth Morris was chief write & editor

Dear Members,

Thanks to all who were able to come to our AGM last month.

I'd like to formally welcome our new President Jonathan White, our new Vice President Jim Robinson, Secretary Wendy Allen and trustees Kathy Gilbert and Paul Harris. It's great to have them on board.

Many thanks to Jonathan for stepping up from the Vice Presidency and welcome back to Jim Robinson. Many of you will remember Jim who was the Society Chairman for thirteen years, retiring from the role in December 2022.

The role of secretary speaks for itself and we are so pleased this position has been filled thanks to Wendy. As you may already know Kathy has been organising our fairs and parties for some time so I'm delighted that she has joined the trustees and Paul Harris, a member of our Heritage Group, has joined the board and will be taking on the Health and Safety remit – **Welcome All!**

Best wishes, Gill

A WORD FROM OUR NEW PRESIDENT

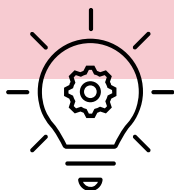
May I say how enormously honoured and privileged I feel to have been elected President of our esteemed Society at our recent AGM. Following on from Don Barrett appears to be a difficult task given his wide-ranging involvement in so many village interests and I applaud him for his contribution. The Garden Friends, Heritage Group, the Photoarchive, book publications, both walking and historical, Blue Plaque Trail and his expertise in technology are just some of them. He continues to offer his knowledge in our Heritage activities. A huge thank you, Don.

I also wish to acknowledge the continuing work of our Trustees, the Environment Group and the Heritage Group, led respectively so well by Gill Battarbee, Rick Battarbee and Ian Cameron. We are fortunate to have them amongst us. Thank you all too for your support.

I am a long-term member of the Society and joined shortly after the Society was formed. I have had a number of roles over the years including publications, road safety, our footpath network and I served as Chairman for a time.

These days my own special interests include road safety, our footpath network and our heritage. I am looking forward to the year ahead and should you wish to contact me I will be pleased to hear from you.

Jonathan



And our President's Poser!

Can you unscramble the following places in Addingham Parish (which includes Village and Moorside)? Answers next month. Good luck!

TPIDLGMEUNNRSIOF (11,5) and DKEEIICCFRTL (7,5)

Addingham Methodist Church

Service of Celebration

Sunday 12th July 2026

2.00 pm

led by former Minister – Rev. Peter Sheasby

Join us as we celebrate
our Time in the Building
and have a last look around
Tea, coffee & cakes
will be served after the Service

EVERYONE WELCOME!

*We'll still be Worshipping in
Addingham - just in a different place!*

**DIARY
DATES**



Celebrating Old Station Way Wildflower Meadow

Sat 27 June 2026

Join us at any time between 2 to 3.30 pm

- Enjoy the flowery delights of the meadow
- Chat with us about plans to install a bench & interpretation board
- Bee & butterfly crafts for children
- Wildflower seedlings potting on
- Refreshments



**ADDINGHAM
MEDICAL CENTRE**



Patient Participation Group

**“Chain of Survival:
How we can all Save Lives and Use of
Defibrillators”**

Tuesday 16th June 2026

Addingham Memorial Hall, Addingham

6.30 pm – Free Refreshments

7.00pm – Presentation

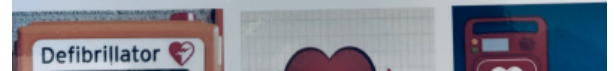
Presented by Emma Turner

Community First Responder & Paramedic
with The Yorkshire Ambulance Service
Assisted by Alan Davies
Retired Community First Responder



Free Admission
All Welcome

(including non-Addingham Medical Centre patients)

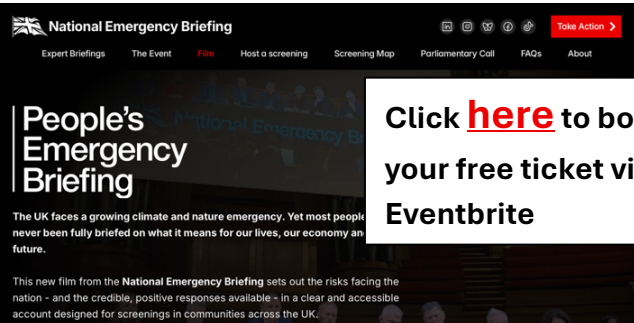
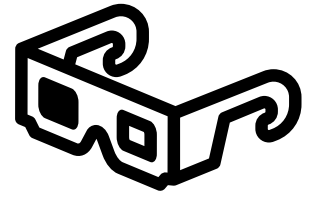


THE PEOPLE'S EMERGENCY BRIEFING

FILM & DISCUSSION EVENT – A MUST SEE
FOR ALL AGE GROUPS

Addingham Memorial Hall

July 3rd at 7.00 pm



The 50-minute film is currently screening in over 2000 communities across the UK.

It details how the climate and nature crisis threatens British food security, public health, and national security, while advocating for a government-led emergency response.

The film is a distilled version of a major Westminster briefing held last year in November 2025, where leading academics, scientists, and public figures presented urgent environmental data to politicians. It focuses on the implications of the changes to our climate in the UK, but crucially highlights credible, evidence-based solutions that can be implemented on a national and local scale.

The aims of the project are:

- i. **to bring together communities**, their Members of Parliament and local councillors to view the facts and discuss how to respond.
- ii. **to present the public with clear, evidence-based data** on how climate and nature breakdown threatens everyday life.
- iii. **to give as many UK residents as possible access** to this important information by asking our MPs to encourage the UK Government to deliver a prime-time, multi-channel showing of the film.
- iv. **to find out about and discuss our community responses**

THE YOUNG ARE CALLING FOR ACTION!

Recently the BBC reported on the outcomes of a Born in Bradford study involving 8,400 young people who were surveyed on their feelings about the climate and nature in their local environment. Nearly a third (32%) saying they felt negative about the environment's future.

As one young person said

"People aren't taking care of this beautiful space that we have access to, and it's making it just a bit more unpleasant to be in." These young people called on the government and large corporations to act urgently.

The Born in Bradford project is a cohort study, based at BRI, that started in 2007. It has become an internationally recognised, world leading research programme following the health and well-being of mothers and children from pregnancy onwards for 20+ years. It's fascinating and the data is proving invaluable. Read more here <https://borninbradford.nhs.uk/>

Rick Battarbee writes about the latest AEG report on Village Birds

The Report is based on data submitted by over 40 residents over the course of 2025, including sightings from across the village and from along fixed transects (walked monthly). It's our **ninth report**, and as in previous years it has been expertly put together by Chris Acomb. It is superbly presented and includes stunning pictures taken by Chris and many of our members.

92 different species were reported in 2025, a very similar number to previous years.

19 of our species are on the UK's Red List, that is a list of birds where there is concern about their future. Of these we have ten species with greater than 10 sightings. These were **curlew, lapwing, greenfinch, house martin, house sparrow, fieldfare, mistle thrush, starling, swift and tree sparrow**. Given their declining status nationally these are birds we need to take special care of.

The report also documents birds in village gardens, birds on the local stretch of the River Wharfe and birds associated with our becks and the Saw Mill Dam. Garden bird numbers were similar to previous years, but it seems to have been a good year in particular for **nuthatches and bullfinches**. Two gardens saw a murmuration of **20 starlings**. On the Wharfe, **mandarin duck** (a non-native species introduced from Asia) had a good year,



Photo: Nuthatch (Austin)



Photo: Bullfinch Male (Benson)

whilst **mallard ducks** on the Saw Mill Dam continue to decline, probably due to **predation from otters and herons** on ducklings. Mallard do however remain very common, seen in our becks and back gardens as

well as on the Saw Mill Dam. **Goldcrest, treecreepers and chiffchaff** are especially noted owing to their overall increase in number (or sightings) over recent years. Chris wonders whether we are getting better and seeing and identifying birds or whether these are real trends in numbers. Time will tell!

Finally the report describes the results from the **transect walks**. These provide exceptionally valuable data, as the transects are fixed routes, walked monthly, and follow national protocols. Transect 1, for example has been walked by Chris every month since **April 2020**, giving us an insight into how species and numbers vary within the year (seasonally), between years and, increasingly over the longer term. Numbers seem to be holding up!

Other transects were started in **2021, 2022 and 2023** and have continued through to the present day, so we are slowly building up our time-series from different parts of the village and surrounding countryside. A new Transect (Transect 9) started up just last year thanks to Catherine Robinson and Sarah Walker. This nicely extends our coverage as it's up on the Moorside and includes ground nesting birds (such as **curlew and lapwing**) associated with the SSSI.

We're hoping that all the transects will be walked again this year and that residents will continue sending in their sightings across the village to **Chris** (chrisacomb55@gmail.com). Do let Chris or myself know if you want to become more involved in our birds projects or if you would like to **join him on one of his monthly transect walks** (starts outside the Coop). Contact at: aeg@addingham.info

For more background and to see all the reports go to the **Birds page on the AEG website using this link:** www.addinghamenvironmentgroup.org.uk/wildlife/birds.

Thanks to everyone for their contributions and thanks again to Chris for his magnificent report.



ADDINGHAM FILM CLUB at MEMORIAL HALL

FRIDAY JUNE 12TH

DOORS OPEN AT 7PM, FILM STARTS AT 7.30 PM

ALL SEATS ONLY £4 , what a bargain!

BYO REFRESHMENTS



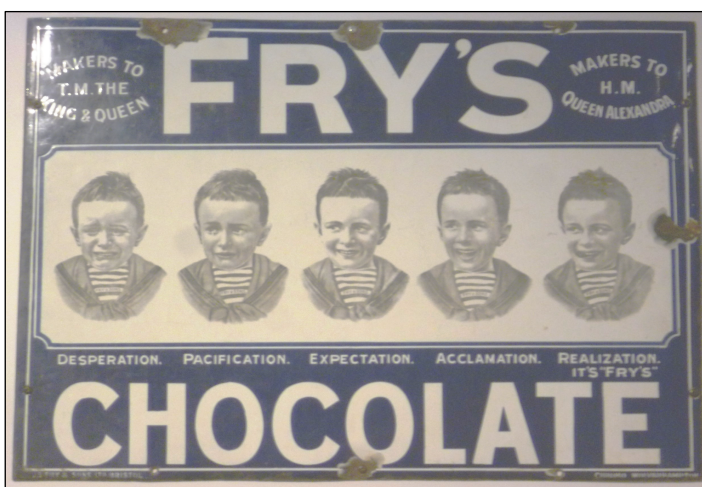
Based on the true story of Tourette syndrome campaigner John Davidson, this funny, heart-warming biopic portrays his life from his teenage year in 1980s' Scotland, highlighting the challenges and prejudices he is forced to navigate along the way, and culminating in his being awarded an MBE for his work on bringing a greater understanding and acceptance of this complex condition.

Ian Cameron from our Heritage Group writes the concluding chapter to 'Our Georgian confectioners' Part Six – 100 years later



Look at the top right of the shop window in this wonderful 1920's photo of Varley's on the Main Street.

There is an advertisement for Fry's Chocolate, emblematic of the huge changes in the confectionary world since our two confectioners, Michael Booker and Zaccheus Steel plied their trade in 1822. Put simply, there is now chocolate, the new kid on the block!



Fry's, a Quaker led Bristol company, produced in 1847 the first solid chocolate bar that was specifically made as an eating chocolate. Later, in 1866, Fry's created Fry's Chocolate Cream, the first mass produced combination candy bar (chocolate and fondant), and the world's oldest chocolate bar brand. The ability to make fondant cream at scale was the big spur to the rise in chocolate.

However, chocolate is a single, smooth colour. To differentiate products, along came branding, packaging and aggressive advertising. Cheap colour printing helped produce striking images and graphics.

The Great Exhibition in 1851 is viewed as a turning point in the way sweets were made. No longer produced by shop keepers on their premises, but instead, made in factories with networks of distribution. Chocolate was also a stable product that could be moved easily around the country, including by the expanding railway lines. The Ilkley line opened in 1865 with Addingham opening in 1888.



So, by 1909, N Demaine at 74 Main Street (see picture of the building it is now), was a very different type of confectioner from the Georgian era. As well as selling chocolate, there would have a range of new enticing products. These included toffee (Farrah's Harrogate Toffee, 1840), Unclaimed Babies (that became Jelly Babies, 1860), caramels (introduced from the USA, 1880's), Rowntree's Fruit Pastilles (1881), Rowntree's Fruit Gums (1893), Liquorice Allsorts (1899), and fudge (introduced from the USA in 1900).

In addition, traditional sugar sweet production had changed. The invention of the hand turned drop roller meant that by the 1850's, hand cutting by scissors was no longer needed for drop (or boiled) sweets. Mechanisation was here to stay. Also, engraved patterns could make these sweets look more interesting. The result was a rise in popularity in boiled sweets particularly fruit drops, and especially pear drops.

So, from Michael Booker and Zaccheus Steel in 1822 to N Demaine in 1909, the confectionary world has been transformed, but still children and adults would have looked in the shop windows with the same joy, delight and anticipation.

WHAT'S ON FURTHER AFIELD?

Why not pop on the train to Bradford and just a few minutes walk from Forster Square is The Loading Bay. A legacy venue from BD25 City of Culture they are again hosting a free show of the actual portraits from the BBC art show. Click here for more info!

[Extraordinary Portraits with Bill Bailey | Bradford Culture](#)



And don't forget Bradford's Cartwright Hall art collection, funded in part by the 1904 Bradford Great Exhibition, with new, well curated exhibitions every season, plus lovely gardens and lake. If you don't fancy public transport, there's plenty of parking there!



NEWS ON ADDINGHAM PRIMARY SCHOOL'S BIGGEST FUNDRAISER

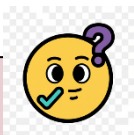
Right now, the school's computer suite is no longer fit for purpose. Most of the computers are outdated, slow and can't be updated. There is no funding available to replace them...

So they are aiming to raise £10,000 to buy new Chromebooks and give the children the IT access we all know they need and deserve.

Their recent It's a Knockout event at the school meant the children and parents have raised through sponsorship and team funding a massive £4200 which is a fantastic start to their target. There's a 'Just Giving' page still open or you can drop donations into the school office. Click here to donate.

<https://www.justgiving.com/charity/Friends-of-Addingham>

Well done to the hard working parents, teachers AND children!



Village Quiz 2026 at Mem Hall, won last year by The Swan!

We have entered a team again for this year's Village Quiz on Saturday 6th September 2026. Can we win *this year*?! If you enjoy quizzing DO get in touch! secretary@addinghamcivicsociety.co.uk

DIARY DATE!



ADDINGHAM GALA DAY SAT JULY 11th

with evening events

also on

FRI JULY 10th

A long time ago in a village

far far away....



CHURCH STREET KIOSK

Sorry that Book Swap is out of action at present 😞

We're awaiting new parts for the door mechanism.



If anyone has any feedback, ideas for articles or info or photos that might be of interest for the next few newsletters then do drop me a line. Gill and I can make space for them and give you some tips on what we need. Thankyou! [Jane addinghamadvert@gmail.com](mailto:Janeaddinghamadvert@gmail.com)